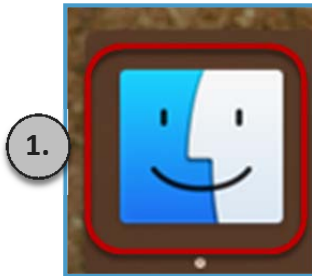
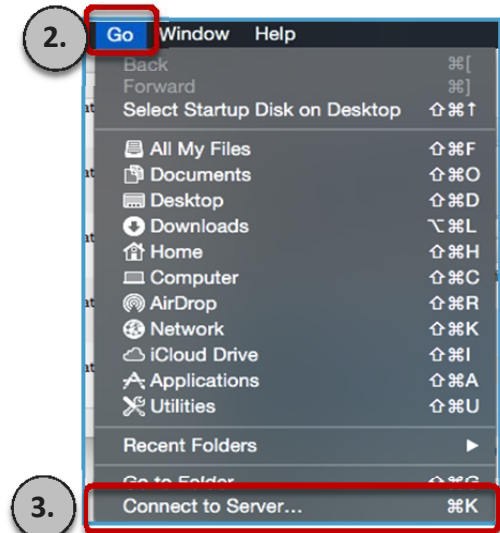


The P Drive can be accessed manually on Macs by completing the following steps:

1. Click on the **FINDER** application located on your dock menu.



2. In the menu bar choose the **GO** dropdown.
3. Select **CONNECT TO SERVER**.



4. In the Server Address field type **smb://ucofs/P**.
5. Click **CONNECT**.
NOTE: If prompted for credentials type in UCO computer username and password.



6. A folder will appear with a specific username. This folder will contain all files and folders.

